

## DOMESTIC REGULATORS

### First Stage Regulators

First stage regulators are typically used to reduce tank pressure to an intermediate pressure, usually 5 to 10 PSI for further pressure reduction by a second stage regulator located closer to the load. This allows for the installation of smaller piping and can contribute to substantial savings. Care must be taken in colder climates to ensure that the pressure setting does not create dew point concerns that could cause the propane vapor to condense back to a liquid resulting in regulator freeze-ups and possible problems at the burner.

### Fisher First Stage Regulators

The **R622H First Stage Regulator** is constructed of corrosion-resistant and wear resistant materials, designed to provide a recommended replacement life of 20 years (a 30% improvement over previously existing designs).

**Features:**

- 1/8" F NPT pressure taps on the inlet and outlet for easy system pressure checks.
- Large 3/4" drip-drip lip vent to reduce vent blockage and freeze-ups.
- High capacity internal relief with built-in travel stop providing the best over-pressure protection in the industry.
- Superior lock-up performance for precise and consistent performance.
- Corrosion resistant materials and coatings for durability.
- Positive draining spring case.
- 5 Year Warranty.

The **R122H First Stage Non-Adjustable Regulator** features a molded diaphragm, over-sized relief valve and a compact design with excellent capacity and performance for a small first stage regulator.



NEE #	Inlet Connection	Outlet Connection	Adjustment Range	Factory Setting	Vent Location	BTU Capacity	Internal Relief
R622H-JGK	F.POL	3/4" F NPT	4-6 PSI	5 PSI	3/4" F NPT Screened and over outlet	2, 250,000	Yes
R622H-HGK	F.POL	1/2" F NPT	4-6 PSI	5 PSI	3/4" F NPT Screened and over outlet	2,000,000	Yes
R622H-BGK	1/2" F NPT	1/2" F NPT	4-6 PSI	5 PSI	3/4" F NPT Screened and over outlet	2,000,000	Yes
R622H-JGJ	F.POL	3/4" F NPT	8-12 PSI	10 PSI	3/4" F NPT Screened and over outlet	2, 500,000	Yes
R622H-HGJ	F.POL	1/2" F NPT	8-12 PSI	10 PSI	3/4" F NPT Screened and over outlet	2, 100,000	Yes
R622H-DGJ	3/4" F NPT	3/4" F NPT	8-12 PSI	10 PSI	3/4" F NPT Screened and over outlet	2, 400,000	Yes
R622H-BGJ	1/2" F NPT	1/2" F NPT	8-12 PSI	10 PSI	3/4" F NPT Screened and over outlet	2, 100,000	Yes
R122H-AAJ	1/4" F NPT	1/2" F NPT	Non Adjustable	10 PSI	3/8" F NPT Screened and over outlet	1, 100,000	Yes

### Sherwood First Stage Regulators



The **Streamline 740HP** is equipped with a 1/8" NPT gauge port, integral relief and Viton seats for a greater range of gas compatibility and chemical resistance.

**Sherwood 800HPS Regulator** can handle large demand with greater accuracy than smaller sized regulators. Features a 1/8" plugged test port for checking outlet pressure conditions and a large capacity relief valve for downstream appliance and piping protection.



NEE #	Inlet Connection	Outlet Connection	Adjustment Range	Factory Setting	Vent Location	BTU Capacity	Internal Relief	Bracket
740HP	1/4" F NPT	1/2" F NPT	8-11 PSI	10 PSI	Screened and over outlet	1,000,000	Yes	700-4
800HPS1	F.POL	1/2" F NPT	5-15 PSI	10 PSI	Screened and over outlet	1, 400,000	Yes	1776-25
800HPS3	F.POL	3/4" F NPT	5-15 PSI	10 PSI	Screened and over outlet	2,000,000	Yes	1776-25

## DOMESTIC REGULATORS

### Second Stage Regulators

REGULATORS

Second stage regulators are used to satisfy the inlet requirements of the appliance and are typically designed to provide propane appliances with a delivery pressure between 9-13 inches water column. As the second regulator of a 2 stage (2 regulator) system, the second stage regulator works with an inlet pressure that is usually between 4 to 10 PSI which allows it to maintain a consistent delivery pressure to the load - regardless of ambient temperatures that affect the pressure of the fuel in the storage tank. Line sizing from the outlet of the regulator is critical for proper performance and the B149 code book provides tables for proper line sizing.

### Fisher Second Stage Regulators

Constructed of corrosion-resistant and wear resistant materials, **R600 Series Fisher Regulators** are designed to provide a recommended replacement life of 20 years (a 30% improvement over previously existing designs). **The R622 and 652 Fisher Regulators** are designed to exceed the UL requirements of NFPA 58 by ensuring that the outlet pressure will never exceed more than 2 PSI - even in a double failure situation when used with the R622H series first stage regulators. **The R622 Regulator** offers a straight through design. **The R652 Regulator** is a 90° configuration with a 3/4" back outlet for direct piping through the wall or into a meter set. **The R222 Compact First Stage Regulators** are built with the same features and benefits as the R622 series, but in a smaller body style.



**Features:**

- 1/8" F NPT pressure taps on the inlet and outlet for easy system pressure checks.
- Large 3/4" drip-drip lip vent to reduce vent blockage and freeze-ups.
- High capacity internal relief with built-in travel stop providing the best over-pressure protection in the industry.
- Superior lock-up performance for precise and consistent performance.
- Corrosion resistant materials and coatings for durability.
- Positive draining spring case.
- 5 Year Warranty.

NEE #	Inlet Connection	Outlet Connection	Adjustment Range	Factory Setting	Vent Location	BTU Capacity	Internal Relief	Bracket
R222-BAF	1/2" F NPT	1/2" F NPT	9-13" WC	11" WC	Over Inlet	450,000	Yes	P100A
R622-BCF		3/4" F NPT				875,000		P100C
R622-CFF		3/4" F NPT				1,400,000		
R622-DFF	3/4" F NPT	3/4" F NPT	9.5-13" WC	18" WC	3/4" F NPT Screened and over outlet	1,000,000		
R652-CFF	1/2" F NPT	3/4" BACK MNT				90°		
R652-DFF	3/4" F NPT	3/4" BACK MNT						
R622-CFGXA	1/2" F NPT	3/4" F NPT	9-13" WC	18" WC	90°			

### Sherwood High Capacity Regulators

For higher capacity domestic and light commercial loads. **Sherwood 800 Series Second Stage Regulators** feature high capacity relief valves and a 1/8" pressure tap for checking outlet pressure settings.



**The 760 Streamline Series Regulators (SSR)** from Sherwood feature a unique flow control limiting device which meets the requirements of UL by limiting downstream pressure to less than 2 PSI in the event of a seat failure. This feature is accomplished by limiting the flow of the regulator to less than 50,000 BTU/hr in the event of a line rupture, gross leak or a demand that exceeds the rated capacity of the regulator. The SSR flow control is intended to reset once the cause of the excess flow condition is corrected resulting in a no-flow condition, allowing the appliance to be restarted.

NEE #	Inlet Connection	Outlet Connection	Adjustment Range	Factory Setting	Vent Location	BTU Capacity	Internal Relief	Bracket
760LP	1/2" F NPT	1/2" F NPT	9-13" WC	11" WC	Over Inlet	500,000	Yes	700-4
800HC		1/2" BACK MNT			3/4" F NPT, Screened and over outlet	800,000		1776-25
800HBC		3/4" F NPT						
800JC		3/4" BACK MNT						
800JBC		3/4" BACK MNT						
800NC	3/4" F NPT	3/4" F NPT						
800NBC		3/4" BACK MNT						



## DOMESTIC REGULATORS

### Second Stage Regulators

#### Sherwood Second Stage Swivel Regulators

Sherwood Swivel regulators incorporate swivel F NPT inlet and / or outlet connections that rotate independently (as a union) to facilitate easy installations in tight working conditions. Available in back-mount (right angle) or straight through configurations. The swivel connections can not be over tightened or loosened from the regulator body during standard installation or replacement. Fast and easy installation or replacement without any special tool requirements.

NEE #	Inlet Connection	Outlet Connection	Adjustment Range	Factory Setting	Vent Location	BTU Capacity	Internal Relief	Bracket
800HCS	1/2" F. NPT Swivel	1/2" F. NPT	9-13" WC	11" WC	Over Inlet	800,000	Yes	1776
800JCS		3/4" F. NPT Swivel						
800NCS	3/4" F. NPT Swivel							
800HBCSR	1/2" F. NPT Swivel	1/2" F. NPT Swivel						
800JBCSR		3/4" F. NPT Swivel						
800NBCSR	3/4" F. NPT Swivel							Request



REGULATORS

### Integral Twin Stage Regulators

An Integral Twin Stage Regulator is a two-piece design that combines an appropriate First Stage Regulator with an outlet pressure of 10 PSI, with a Second Stage Regulator designed to provide 9-13" WC delivery pressure to the appliance all in one convenient housing. These are typically installed on a tank that is located within 30 feet of the appliance or load. This distance can be extended based on the BTU capacity of the application, but care must be taken with line sizing in order to ensure that the appliance inlet pressure requirements are met.



#### Fisher Integral Twin Stage Regulators

NEE #	Inlet Connection	Outlet Connection	Adjustment Range	Factory Setting	Vent Location	BTU Capacity	Internal Relief	Bracket
R232-BBF	1/4" F NPT	1/2" F NPT	9-13" WC	11" WC	Over outlet	350,000	Yes	P100A
R232-BBFXA	1/4" F NPT	1/2" F NPT	9-13" WC	11" WC	90°	350,000	Yes	P100A
R232-HBF	F POL	1/2" F NPT	9-13" WC	11" WC	Over outlet	350,000	Yes	P100A
R232-HBFXA	F POL	1/2" F NPT	9-13" WC	11" WC	90°	350,000	Yes	P100A
R632-BCF	1/4" F NPT	1/2" F NPT	9-13" WC	11" WC	Over outlet	700,000	Yes	P100C
R632-BCFXA	1/4" F NPT	1/2" F NPT	9-13" WC	11" WC	90°	700,000	Yes	P100C
R632-HCF	F. POL	1/2" F NPT	9-13" WC	11" WC	Over outlet	700,000	Yes	P100C
R632-HCFXA	F. POL	1/2" F NPT	9-13" WC	11" WC	90°	700,000	Yes	P100C
R632-JFF	F. POL	3/4" F NPT	9-13" WC	11" WC	Over outlet	750,000	Yes	P100C
R632-JFFXA	F. POL	3/4" F NPT	9-13" WC	11" WC	90°	750,000	Yes	P100C
R632-CFF	1/4" F NPT	3/4" F NPT	9-13" WC	11" WC	Over outlet	750,000	Yes	P100C
R632-CFFXA	1/4" F NPT	3/4" F NPT	9-13" WC	11" WC	90°	750,000	Yes	P100C

Features all of the benefits of the 600 series in a single compact design. **The new R232 series** introduces a 90° vent option allowing the unit to be easily mounted under the dome of a cylinder with the vent pointed down. A larger molded diaphragm, dual pressure taps, wrench flat inlet casing, new "non-crimped" bonnet assembly and re-designed seat and orifice design all contribute to a regulator with greater capacity and superior lock-up performance that's easier for the serviceman to install.



R232 Series

## DOMESTIC REGULATORS

REGULATORS

### Integral Twin Stage Regulators

#### Sherwood Integral Twin Stage Regulators

**Sherwood 900 Series Regulators** combine first and second stage regulators in one unit with 11" WC delivery pressure. Features include a 1/8" pressure tap, high capacity relief and a compact body size.



**Sherwood SSR Twin Stage Regulators** feature the same flow limiting safety device as the 760 second stage regulator which restricts the discharge of propane through the vent and to the appliance by limiting the flow to 50,000 BTU or less. Features a 1/8" pressure tap on both first and second stage portions.

**The Streamline 720C Regulator** is sized for most RV applications while **the 720A and 720B** will meet most domestic applications. With the flow limiting device minimizing the discharge through the vent, the 720A and 720B are ideal for pool heater applications. By allowing you to vent the regulator relief valve with 3/8" copper, the installation costs can be minimized.



900 Series

*StreamLine*



720 Series

NEE #	Inlet Connection	Outlet Connection	Adjustment Range	Factory Setting	Vent Location	BTU Capacity	Internal Relief	Part #
920	1/4" F NPT	1/2" F NPT	9-13" WC	11" WC	Over outlet	50,000	Yes	1776-25
921	F POL	1/2" F NPT	9-13" WC	11" WC	Over outlet	50,000	Yes	1776-25
920A	1/4" F NPT	3/4" F NPT	9-13" WC	11" WC	Over outlet	55,000	Yes	1776-25
720A	1/4" F NPT	3/8" F NPT	9-13" WC	11" WC	Over outlet	50,000	Yes	700-1
720B	1/4" F NPT	3/8" F NPT	9-13" WC	11" WC	Over outlet	50,000	Yes	700-1
720C	1/4" F NPT	3/8" F NPT	9-13" WC	11" WC	Over outlet	160,000	Yes	700-1

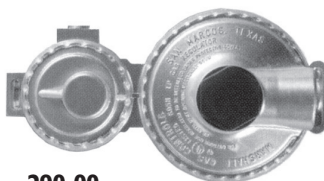
#### Marshall Gas Twin Stage Regulators

Typically used in RV applications and are not recommended for use as a domestic regulator.

NEE #	Inlet Connection	Outlet Connection	Adjustment Range	Factory Setting	Vent Location	BTU Capacity	Internal Relief
290-00	1/4" F NPT	3/8" F NPT	9-13" WC	11" WC	Over outlet	90,000	Yes
294-00	POL w/ Excess Flow	3/8" F NPT	9-13" WC	11" WC	90°	90,000	Yes
299-00	1/4" F NPT	3/8" F NPT	9-13" WC	11" WC	90°	90,000	Yes



Marshall Gas Controls  
Division of S.H. Leggett Co.



290-00



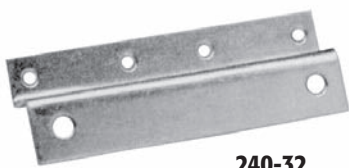
294-00



299-00

#### Accessories

for Marshall Gas Twin Stage Regulators



240-32

NEE #	Description
861-01	First Stage cover
862-00	Second Stage Cover
863-00	First and Second Stage Covers (861-01 and 862-00)
240-32	Mounting Bracket



861-01



862-00

## DOMESTIC REGULATORS

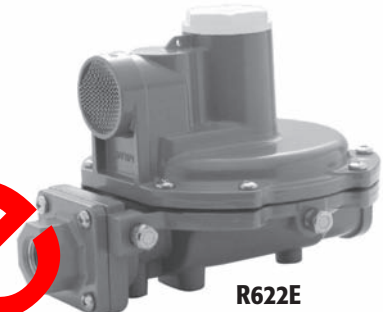
### Two PSI Regulators

#### Fisher & Sherwood Two PSI Regulators

Two PSI Regulators are used as an intermediate regulator installed on the outside of a building delivering propane to a manifold inside the building that is used to distribute the gas to second stage regulators supplying approximately 11" WC to the appliances. The benefit of a 2 PSI system is reduced piping costs, as the higher pressure allows smaller diameter piping to be used. Two PSI systems are popular with CSST (Corrugated Stainless Steel Tubing) installations. These regulators are typically painted white for easy identification.



NEE #	Inlet Connection	Outlet Connection	Adjustment Range	Factory Setting	Vent Location	BTU Capacity	Internal Relief
R622E-BCH	1/2" F NPT	1/2" F NPT	1 - 2.5 PSI	2 PSI	Over outlet	987,000	Yes
R622E-DCH	3/4" F NPT	3/4" F NPT	1 - 2.5 PSI	2 PSI	Over outlet	1,024,000	Yes
750MP	1/2" F NPT	1/2" F NPT	2 Lb Non-Adj	2 PSI	Over outlet	400,000	Yes



#### Sherwood Two PSI Swivel Regulators



Sherwood swivel regulators incorporate swivel F NPT inlet connection that rotates independently (as a result of the swivel) to facilitate easy installations in tight working conditions. The swivel connections can not be over tightened or loosened from the regulator body during standard installation or replacement. Fast and easy installation or replacement without any special tool requirements.

NEE #	Inlet Connection	Outlet Connection	Adjustment Range	Factory Setting	Vent Location	BTU Capacity	Internal Relief
800JPS	3/4" F NPT Swivel	3/4" F NPT	1 - 2.5 PSI	2 PSI	Above Inlet	1,175,000	Yes
800MPS	1/2" F NPT Swivel	1/2" F NPT	1 - 2.5 PSI	2 PSI	Above Inlet	1,050,000	Yes

## DOMESTIC REGULATORS

### Automatic Changeover Regulators

#### Automatic Changeover Regulators

Changeover regulators are an integral two stage regulator with a first stage regulator module that is connected to two cylinders. The regulator is designed to allow automatic change-over when one cylinder becomes empty, allowing you to change cylinders without interruption of service to the gas appliance. Ideal for motor homes, RV's, and domestic installations because they maintain reliable uninterrupted service when using two cylinders. Remote indicators are available for some models to allow you to monitor the cylinder volume at distances up to 10 ft from the regulator.

NEE #	Inlet Connection	Outlet Connection	Adjustment Range	Factory Setting	Bracket	BTU Capacity	Pigtails	Remote Indicator
PRI1776AFD-1	1/4" Inv. Flare	1/2" F NPT	9-13" WC	11" WC	1776-25	375,000	2- ME1663-20	Direct read
730B	1/4" Inv. Flare	1/2" F NPT	9-13" WC	11" WC	700-1	400,000	2- ME1663-20	N/A
730A	1/4" Inv. Flare	3/8" F NPT	9-13" WC	11" WC	700-1	200,000	2- ME1663-20	N/A
730C	1/4" Inv. Flare	3/8" F NPT	9-13" WC	11" WC	700-1	200,000	2- ME1663-20	N/A
254-00	1/4" Inv. Flare	3/8" F NPT	9-13" WC	11" WC	240-32	75,000	2- ME1663-20	862-00 cover

\* Included with regulator package



### Fisher Commercial / Industrial Automatic Changeover Assemblies & Manifolds

#### Changeover Assemblies (Manifold & Final Stage Regulator)

Fisher Commercial Changeover Assemblies are designed for large capacity multi-cylinder or tank installations such as bakeries, motels, restaurants and crop dryers. The 64SR-122 first stage manifold consist of two 64 series regulators and a direct mounted 803 indicator.

NEE #	Inlet Connection	Outlet Connection	Adjustment Range	Factory Setting	BTU Capacity	Features
64SR-122	1/2" F NPT	1/2" F NPT	5 - 20 PSI	10 PSIG	1, 210,000	With internal relief



#### Changeover Manifolds (Manifolds Only)

Fisher Commercial Changeover Manifolds are intended for use with second stage regulators and / or separate relief devices which provide the overpressure protection required by code. The capacity of these manifolds is dependent on the size of the second stage regulator used in the piping system.



NEE #	Inlet Connection	Outlet Connection	Supply Setting	Reserve Setting	BTU Capacity	Features
R110-21	1/4" Inv Flare	1/4" F NPT	15 PSI	7 PSI	500,000	With indicator
749B-21	1/2" F NPT	1/2" F NPT	15 PSI	5 PSI	1, 500,000	Two 64 series regs



## DOMESTIC REGULATORS

### Small Single Stage Regulators for Grills and Portable Appliances

*-- Not Approved for RV use or on fixed piping systems for home heating or domestic applications --*

REGULATORS

NEE #	Inlet Connection	Outlet Connection	Adjustment Range	Factory Setting	Vent Location	BTU Capacity	Cover
230-00	1/4" F NPT	3/8" F NPT	9-13" WC	11" WC	Over outlet	120,000	850-00
218-00	S.N. MPOL Handwheel	3/8" F NPT	9-13" WC	11" WC	90°	120,000	850-00
230-90	1/4" F NPT	3/8" F NPT	9-13" WC	11" WC	90°	120,000	850-00
231-00	H.N. MPOL	3/8" F NPT	9-13" WC	11" WC	90°	120,000	850-00
224-00	H.N. MPOL	3/8" F NPT	9-13" WC	11" WC	Over outlet	120,000	850-00
230#1326	QCC-1	3/8" F NPT	9-13" WC	11" WC	Over outlet	120,000	850-00
140-38	1/4" F NPT, 90°	3/8" F NPT	9-13" WC	11" WC	Over inlet	120,000	850-00
912-101	1/4" F NPT	3/8" F NPT	9-13" WC	11" WC	Slotted screen Over outlet	220,000	P331 To be used when installed Horizontally
912-104	1/4" F NPT	1/4" F NPT	9-13" WC	11" WC	Slotted screen Over	220,000	P331 To be used when installed Horizontally
912-115	1/4" F NPT	3/8" F NPT	9-13" WC	11" WC	1/8" F NPT Over Outlet	220,000	P331 To be used when installed Horizontally
912-122	H.N. MPOL	3/8" F NPT	9-13" WC	11" WC	1/8" F NPT Over Outlet	220,000	P331 To be used when installed Horizontally
912-267	1/4" F NPT	3/8" F NPT	Factory set	4.5" WC	1/8" F NPT Over Outlet	220,000	P331 To be used when installed Horizontally



230-00



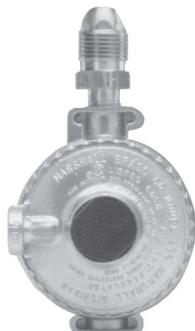
218-00



912 Series



230-90



231-00



Marshall Gas Controls  
Division of S.H. Leggett Co.