

### TECHNICAL DATA SHEET



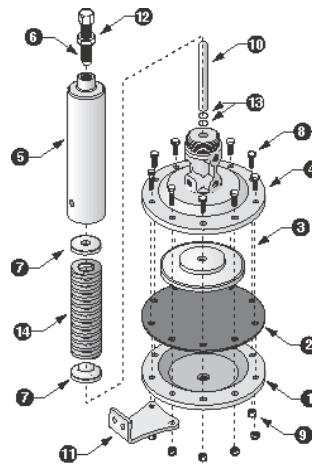
#### Features

- Simple trouble-free design.
- High flow rates and low head loss for maximum efficiency.
- Smooth opening and closing.
- Versatile control options meet most flow and pressure requirements.
- Threaded ends on 2" and 3" sizes.
- Wafer end on 3" through 8" sizes.
- Drip-tight shut off.

#### Series 9300 Linear Flow Control Valve

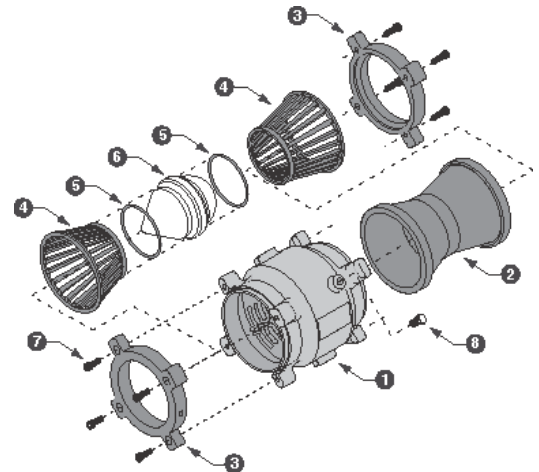
##### Material Specifications - Pilot

Item	Description	Material	Specification
1	Diaphragm Cover	Red Brass	ASTM B584, Alloy C844
2	Diaphragm	Nitrile / Nylon	
3	Diaphragm Plate	Stainless Steel	ASTM A581, A582
4	Body	Red Brass	ASTM B584, Alloy C844
5	Spring Housing	Red Brass	ASTM B584, Alloy C844
6	Adjusting Screw	Brass	ASTM B16
7	Spring Plate	Stainless Steel	ASTM A581, A582
8	Hex Bolt	Stainless Steel	ASTM F593, Alloy Group 1
9	Hex Nut	Stainless Steel	ASTM F594, Alloy Group 1
10	Diaphragm Pilot	Stainless Steel	ASTM A581
11	Mounting Brkt.	Stainless Steel	ASTM A240
12	Lock Nut	Stainless Steel	ASTM F594, Alloy Group 1
13	O-Ring	Buna-N	ASTM D2000
14	Spring	Chromium Vanadium Steel	ASTM A232



##### Material Specifications - Valve

Item	Description	Material	Specification
1	Body	Brass	ASTM B584, Alloy C844
1b	Body	Ductile Iron	ASTM A395-60, 40-18
2	Sleeve	Buna-N	ASTM D2000
3	End Flange	Brass	ASTM B584, Alloy C844
3a	End Flange	Cast Iron	ASTM A126, Class B
4	End Cage	Brass	ASTM B584, Alloy C844
4a	End Cage	Ductile Iron	ASTM A375-60, 40-18
5	O-Ring	Buna-N	ASTM D2000
6	Sealing Disc	UHMW Polyethylene	ASTM D4020
7	Bolts	Stainless Steel	ASTM F593, Alloy Group 1
8	Plug	Brass	ASTM B16

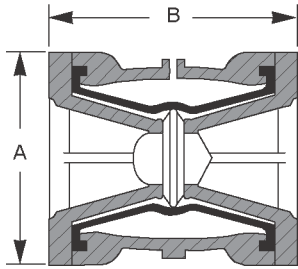


#### Applications

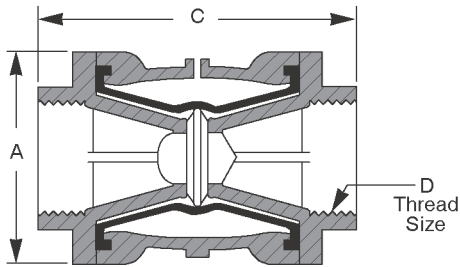
The Series 9300 Linear Flow Control Valve is designed for use in a wide variety of irrigation and water control applications. Examples include simple on/off control to pipelines, center pivots or wheel lines. They can control excessive pressure at pumps and provide effective zone control in orchards, vineyards and row crops.

### SPECIFICATIONS

CONTROL VALVE



**Wafer Style**



**Threaded Style**

#### Pressure Rating

Rubber sleeve recommended (upstream):

	Min.	Max.
F-Sleeve	15 PSI.....	75 PSI
G-Sleeve	30 PSI.....	250 PSI

Maximum Operating Pressure:

Aluminum.....	150 PSI
Brass.....	250 PSI
Ductile Iron.....	250 PSI

#### Installation

The Linear flow valve 2" and 3" models are designed to be threaded onto steel or plastic pipe. Sizes 3" through 8" are wafer style and installed between 125/150 lb. flanges using bolt packs.

#### Electrical Data

Standard 3-way electrical solenoid.

Solenoid voltage available.  
24, 110, 240, 280, 480 VAC  
12, 24 VDC

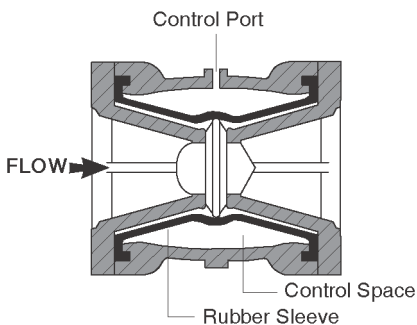
#### Dimensional Information

Valve Size (inches)	Dimensions (Inches)			
	A	B	C	D
2	6	-	7 1/8	2" NPT
3	6 11/16	6 3/16	9 1/8	3" NPT
4	7 13/16	7 3/4	-	-
6	10 11/16	9 1/2	-	-
8	11 29/32	11 1/2	-	-

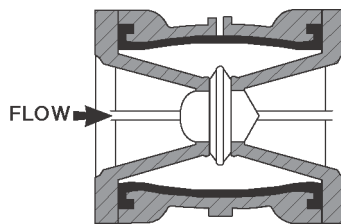
#### Options

- On/Off Electric
- Pressure Reducing
- Pressure Relief
- Pressure Sustaining
- Electric Pressure Sustaining
- Electric Pressure Reducing
- Normally Open

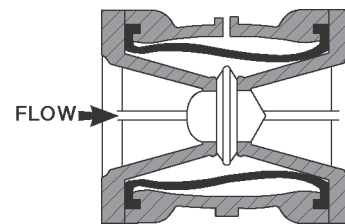
#### Operation



**CLOSED** - The rubber sleeve is in a normally closed position. When there is no flow pressure on the valve or equal upstream and control space pressure, the natural tendency of the resilient sleeve holds the valve closed.



**OPEN** - When flow and pressure are applied, the valve opens. Line pressure stretches the rubber sleeve against the valve body.



**REGULATING** - A stable throttling position is obtained when a quantity of water is trapped in the control space. In this position the valve serves as a pressure control valve.